

# DoD Consolidated Influenza Surveillance Report

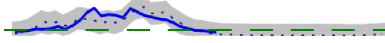


Week 17 (21 April 2024 - 27 April 2024)



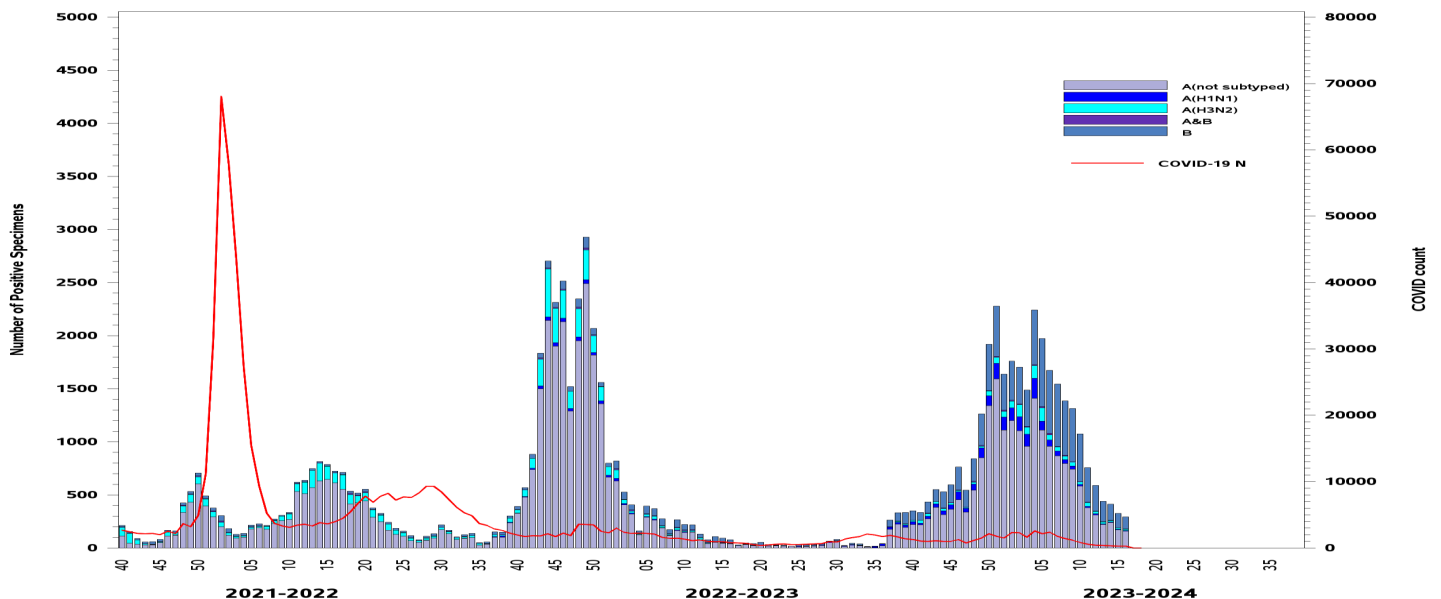
## One Page Summary: Weekly Highlights

- Laboratory-confirmed influenza cases and hospitalizations had low activity level for all beneficiaries and service members.
- COVID-19 cases predominated among service members and beneficiaries 65 years or older. However, influenza is predominating this season among all other beneficiaries.
- There were 8 new laboratory-confirmed influenza hospitalizations reported for week 16 (Season totals: 584; 64 service members and 520 other beneficiaries).

## Influenza Surveillance Indicators (2023-2024 season)

All Beneficiaries	Total Per Week	Trend	Activity Level
Laboratory Cases	292		Low
<b>Severity</b>			<b>Activity Level</b>
Inpatient Laboratory Cases	9		Low
<b>Active Component</b>			<b>Activity Level</b>
Laboratory Cases	89		Low

## Laboratory-Confirmed Influenza and COVID-19 among Beneficiaries: Serotype Distribution

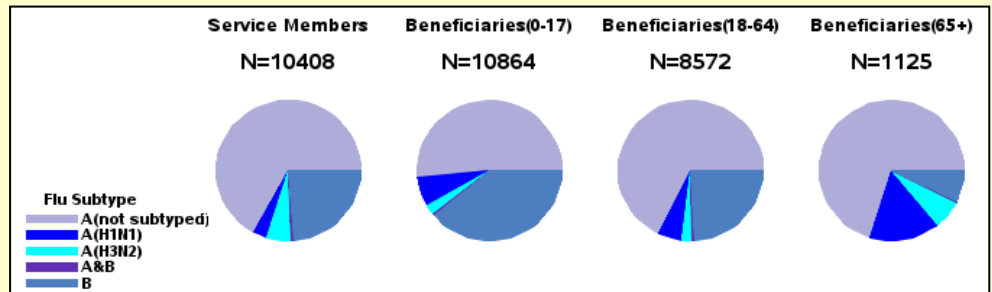


# Confirmed Influenza and COVID-19 Cases (2023-2024 Season: Week 17)

\*Reporting of laboratory data from MHS GENESIS is typically delayed by 2 weeks

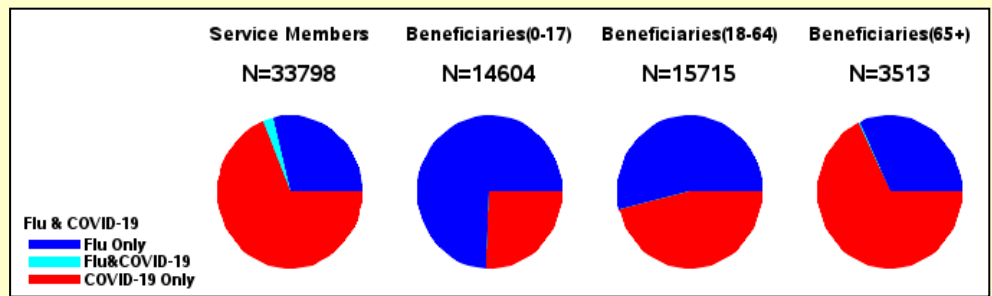
## Number and Distribution of Influenza Positive Specimens since week 40, by Beneficiary Status and Serotype

- The number of laboratory-confirmed influenza positive specimens for the season to date was highest among children (10,864), followed closely by service members (10,408).
- Among subtyped influenza A specimens, A(H1N1) has predominated, except among service members where A(H3N2) has predominated.

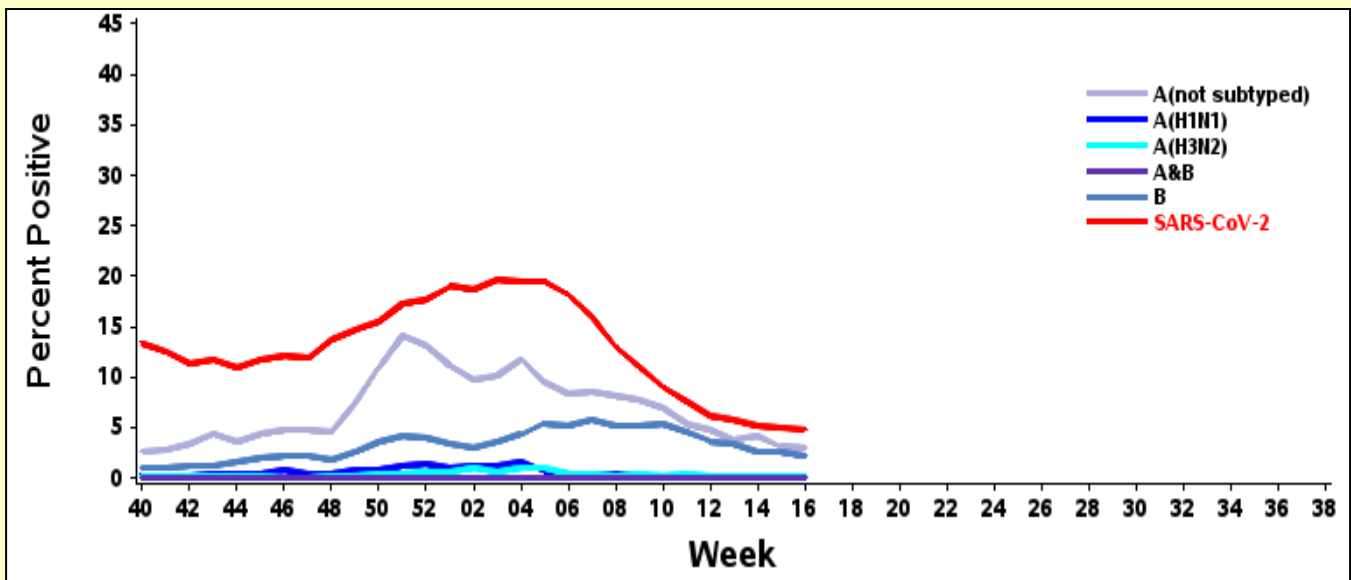


## Number and Distribution of Influenza Positive Specimens and COVID-19 Cases since week 40, by Beneficiary Status

- COVID-19 cases predominated among service members and beneficiaries 65 years or older. However, influenza is predominating this season among all other beneficiaries.



## Percent of Specimens Positive for Influenza (by Serotype) or SARS-CoV-2



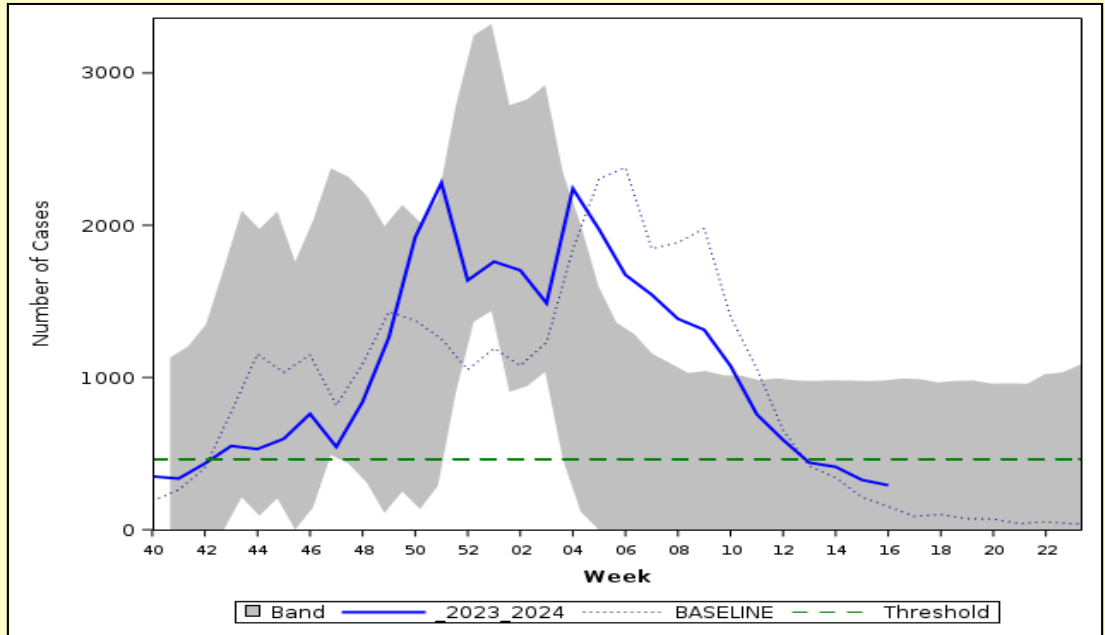
- The percent of specimens positive for SARS-CoV-2 continued to decrease. The percent of specimens positive for influenza decreased or remained stable, depending on the type and subtype.

# Laboratory-Confirmed Influenza (2023 2024 Season: Week 17)

\*Reporting of laboratory data from MHS GENESIS is typically delayed by 2 weeks

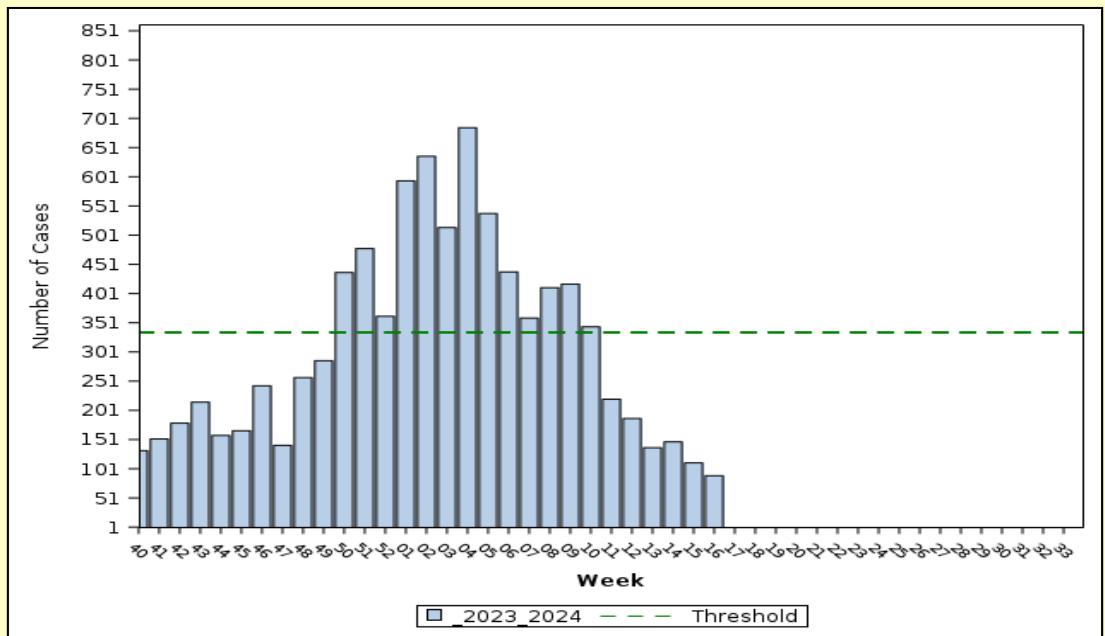
## Laboratory-Positive Influenza Cases, All Beneficiaries

- The number of laboratory-confirmed influenza cases among all beneficiaries continued to decrease and was just above baseline, but below the threshold.
- Band indicates one standard deviation above and below seasonal baseline estimates. Threshold indicates two standard deviations above off-season average.



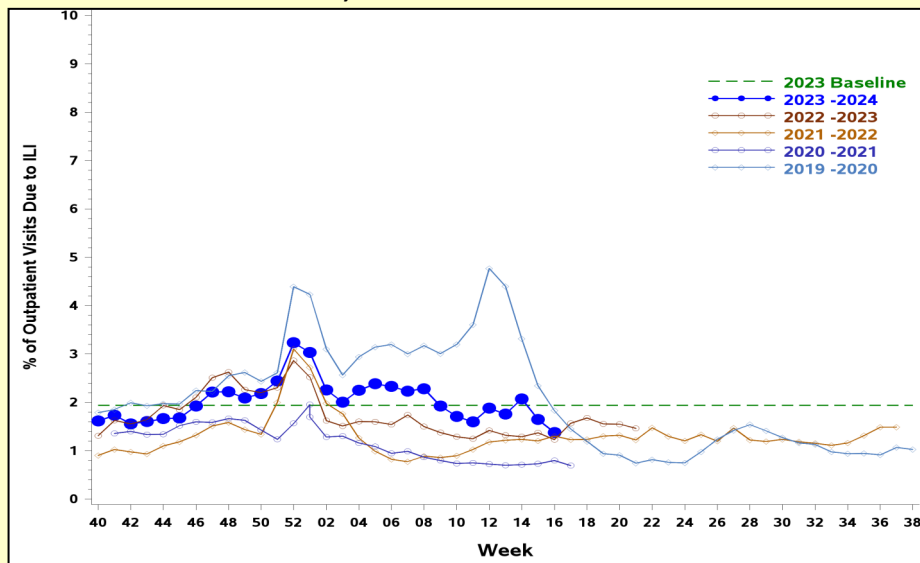
## Laboratory-Positive Influenza Cases, Active Component Service

- The number of active component service member laboratory-confirmed influenza cases continued to decrease from week 09 and remained below the threshold.
- Threshold indicates two standard deviations above seasonal baseline estimates.



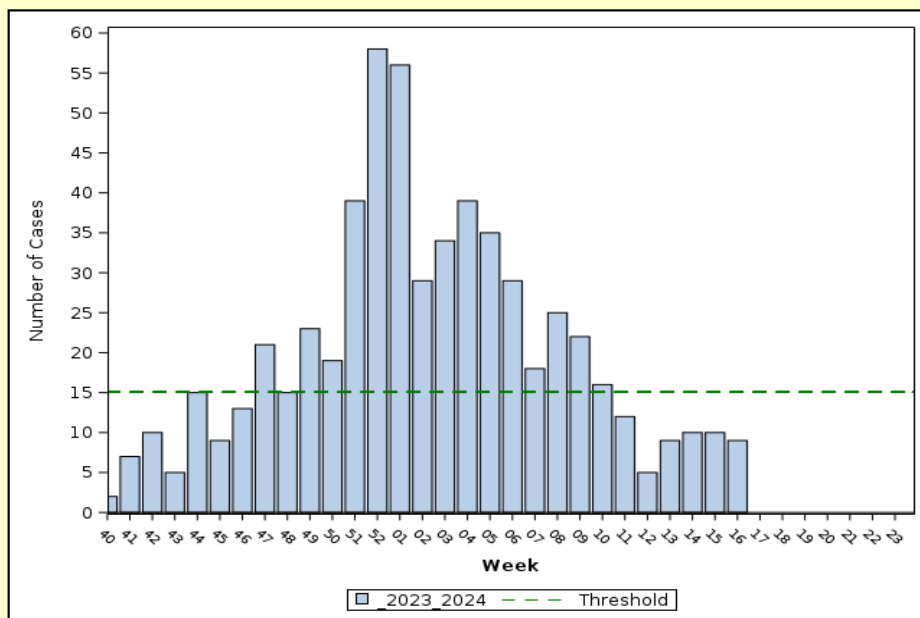
# ILI and Hospitalized Influenza (2023-2024 Season: Week 17)

**Percent of Outpatient Visits Due to ILI:  
Service Members, 2019-2020 to 2023-2024 Seasons**



- The percentage of outpatient visits due to ILI continued to decrease and was below baseline and similar to prior seasons, except the 2019-2020 season.

**Hospitalized Laboratory-Positive Influenza Cases, All Beneficiaries**



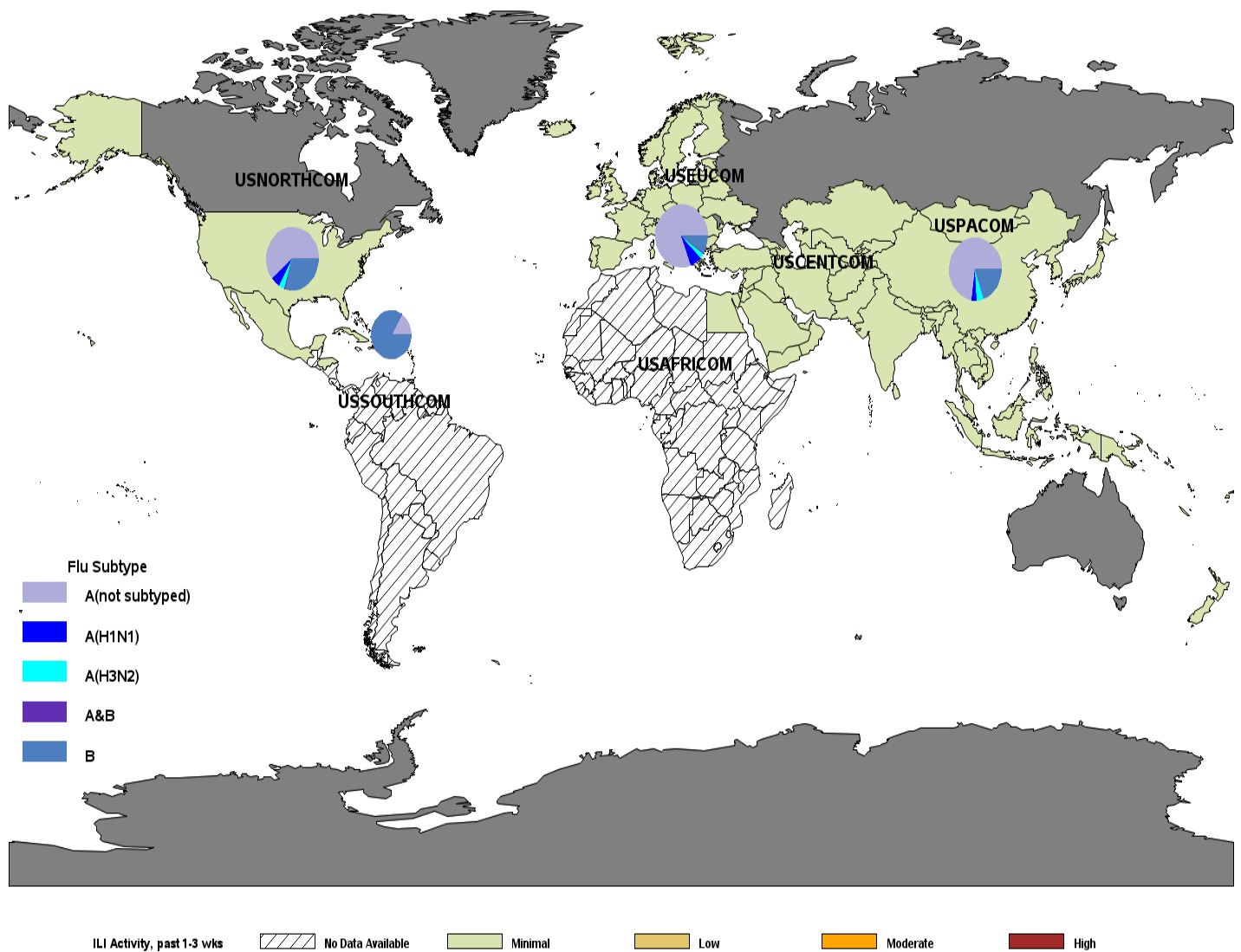
- There were 8 new laboratory-confirmed influenza hospitalizations reported for week 16 (the last week with available data) (Season totals: 584; 64 service members and 520 other beneficiaries).
- Thresholds indicate one standard deviation above the overall weighted average during the season. However, there is not enough data for the season to calculate the threshold for the influenza-specific antiviral prescriptions metric.

# Influenza Activity: Geographic Combatant Command

(2023 2024 Season: Week 17)

- USNORTHCOM: ILI activity remained minimal. The majority of laboratory-confirmed influenza cases have been influenza A (not subtyped) and influenza B. Among subtyped influenza A specimens, the majority have been A(H1N1).
- USEUCOM: ILI activity was minimal. The majority of laboratory-confirmed influenza cases have been influenza A (not subtyped) and A(H1N1).
- USINDOPACOM: ILI activity was minimal. The majority of laboratory-confirmed influenza cases have been influenza A (not subtyped) and influenza B. Among subtyped influenza A specimens, the majority have been A(H3N2).
- USSOUTHCOM: ILI activity remained minimal. Six specimens have tested positive for influenza this season; 5 were influenza B and 1 was influenza A (not subtyped).
- USCENTCOM: ILI activity remained minimal.

## ILI Activity (Service Members) and Laboratory-Confirmed Influenza (All Beneficiaries)

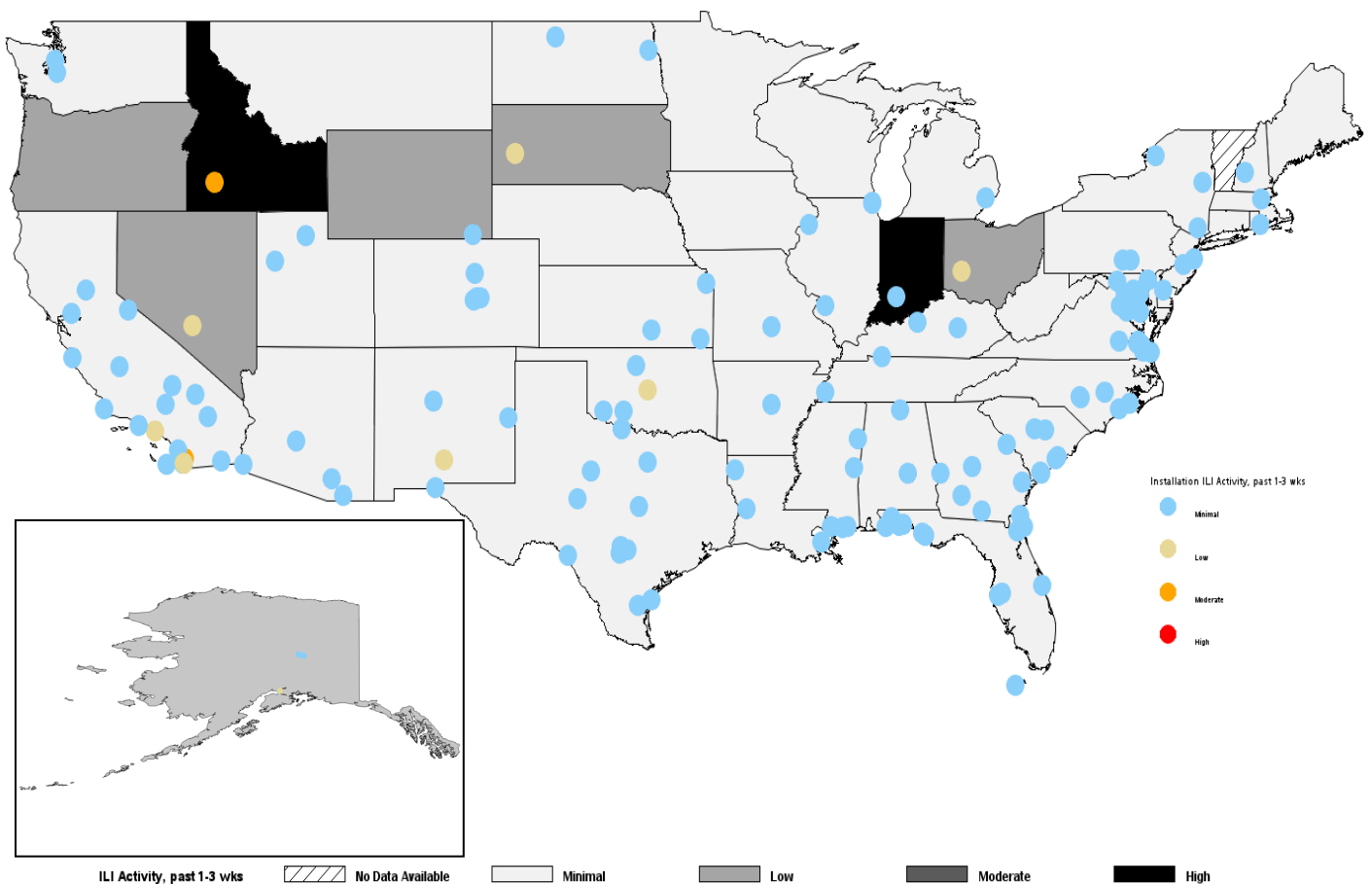


\*Locations colored in dark gray have no service member medical encounter data.

# Influenza Activity: USNORTHCOM (2023 2024 Season: Week 17)

- ILI activity at the installation level, averaged over weeks 14-16, was primarily minimal. However, one installation, Mountain Home Air Force Base in Idaho, had moderate ILI activity.
- States had minimal to low ILI activity (averaged over weeks 14-16), except for Idaho and Indiana, which both had high ILI activity.
- State level data includes both Military Treatment Facility (MTF) and outsourced care. Therefore, state activity levels may differ from the installation level data.
- Installation-level laboratory-confirmed influenza and COVID-19 case data can be found on pages 13-19 of the report.

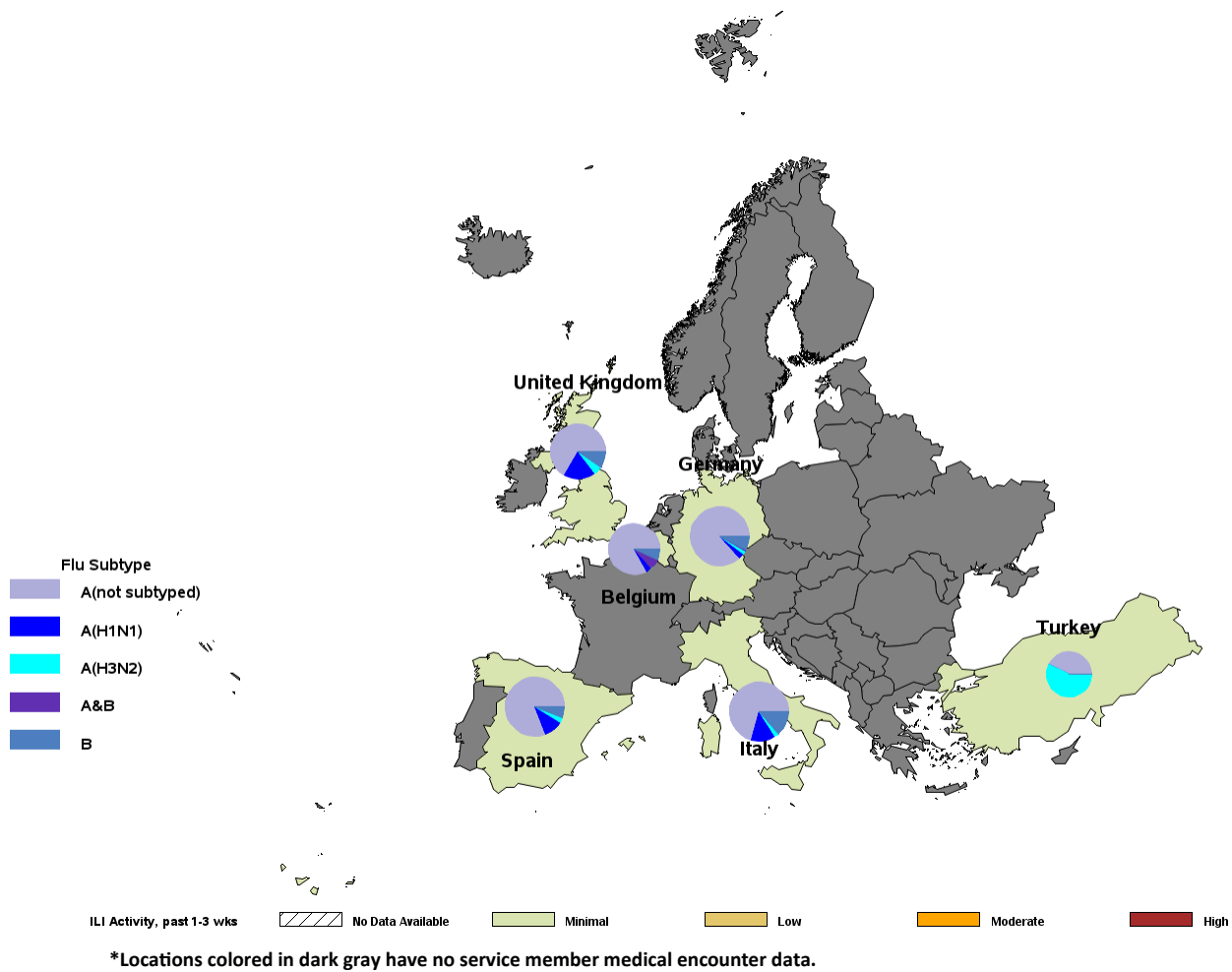
## ILI Activity (Service Members) by State and Installation



# Influenza and COVID-19 Activity: USEUCOM (2023-2024 Season: Week 17)

- ILI activity, averaged over weeks 14-16, was minimal across EUCOM.
- The majority of laboratory-confirmed influenza cases for USEUCOM have been Influenza A (not subtyped). Among subtyped specimens, A(H1N1) has predominated, except for Turkey where A(H3N2) has predominated.
- Installation-level laboratory-confirmed influenza and COVID-19 case data for USEUCOM can be found on page 8 of the report.

## ILI Activity (Service Members) and Laboratory-Confirmed Influenza (All Beneficiaries)



# Confirmed Influenza and COVID-19: USEUCOM (2023 2024 Season: Week 17)

## Laboratory-Confirmed Influenza by Installation (All Beneficiaries)

Country	Location	Service	A (not sub typed)		A (H1N1)		A (H3N2)		A & B		B		Total positive	Total tested	% Positive	Change from past 2 weeks
			2 wks	Season	2 wks	Season	2 wks	Season	2 wks	Season	2 wks	Season	2 wks	Season	2 wks	
Belgium	BRUSSELS	J	0	4	0	0	0	0	0	0	0	2	0	2	0	=
Belgium	SHAPE	J	0	21	0	1	0	0	0	2	0	0	0	11	0	=
Germany	BAUMHOLDER	J	0	3	0	0	0	0	0	0	0	1	0	3	0	=
Germany	GEILENKIRCHEN NATO AB	J	0	5	0	0	0	0	0	1	1	3	1	3	33	-
Germany	GRAFENWOEHR	J	0	57	0	0	0	1	0	0	0	1	0	5	0	=
Germany	HOHENFELS/AMBERG	J	0	11	0	0	0	0	0	0	0	0	0	3	0	=
Germany	KAISERSLAUTERN	J	0	11	0	0	0	1	0	0	0	1	0	5	0	=
Germany	LANDSTUHL	J	1	128	0	2	0	0	0	1	1	10	2	79	3	-
Germany	PATCH BARRACKS	J	0	43	0	0	0	0	0	0	0	2	0	9	0	=
Germany	RAMSTEIN AB	J	0	5	0	0	0	2	0	0	0	3	0	3	0	=
Germany	SPANGDAHLEM AB	J	0	4	0	7	0	3	0	0	0	0	0	2	0	=
Germany	VILSECK	J	3	30	0	0	0	0	0	0	0	4	3	10	30	+
Germany	WIESBADEN	J	0	0	0	0	0	0	0	0	0	1	0	3	0	=
Italy	AVIANO AB	J	0	4	0	0	0	0	0	0	0	0	0	3	0	=
Italy	CAPODICHINO	J	0	7	0	0	0	0	0	0	0	0	0	1	0	=
Italy	NAPLES	J	0	43	0	0	0	0	0	0	0	2	0	24	0	=
Italy	NAS SIGONELLA	J	0	4	0	18	0	3	0	0	0	3	0	16	0	=
Italy	VICENZA	J	0	36	0	0	0	0	0	0	0	13	0	36	0	=
Spain	ROTA	J	0	55	0	7	0	2	0	0	0	4	0	8	0	=
Turkey	INCIRLIK AB	J	0	3	0	0	0	4	0	0	0	0	0	1	0	=
United Kingdom	RAF LAKENHEATH	J	0	28	0	8	0	2	0	0	0	4	0	27	0	=

## COVID-19 Cases Since Week 40 by Installation (All Beneficiaries)

Country	Location	Service	COVID 19		Change from past 2 weeks
			2 wks	Since week 41	
Germany	LANDSTUHL	J	7	466	+
Germany	RAMSTEIN AB	J	3	23	=
Germany	VILSECK	J	1	202	=
Italy	NAPLES	J	0	57	=
Italy	NAS SIGONELLA	J	7	170	+
Spain	ROTA	J	1	41	=
Turkey	INCIRLIK AB	J	0	55	=
United Kingdom	RAF LAKENHEATH	J	0	149	=

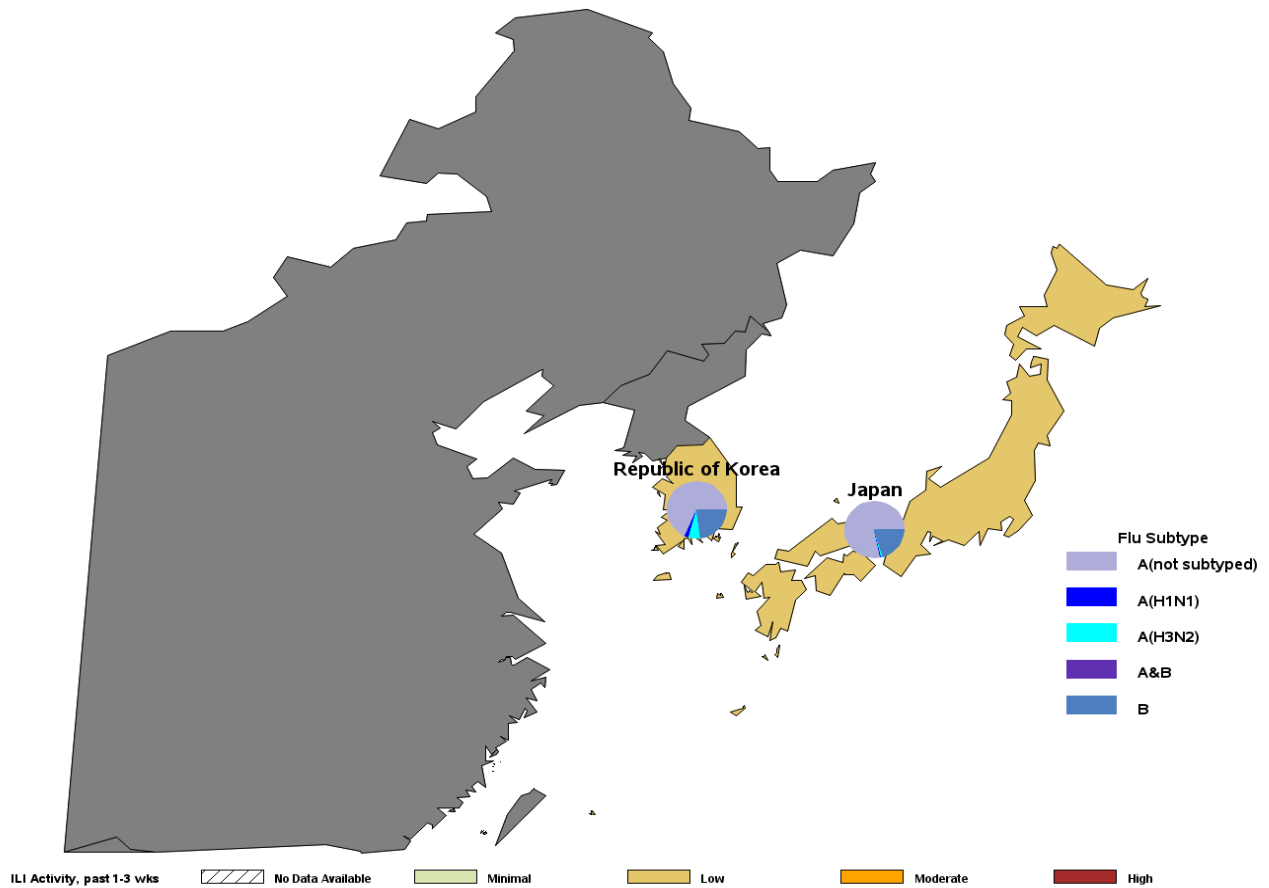
“2 wks” in the tables is defined as labs collected 7-21 days prior to the current week of the report. This delay is due to delays in receiving data from MHS GENESIS.



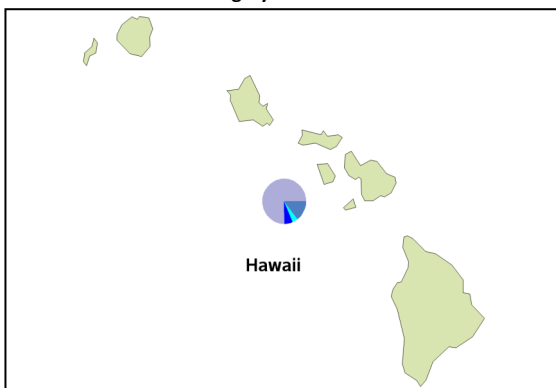
# Influenza Activity: USINDOPACOM (2023 2024 Season: Week 17)

- ILI activity, averaged over weeks 14-16 was low in the Republic of Korea and Japan, but was minimal in Guam and Hawaii.
- The majority of laboratory-confirmed influenza cases for USINDOPACOM have been Influenza A (not subtyped). Among sub-typed specimens, A(H1N1) has predominated overall, but A(H3N2) has predominated in the Republic of Korea.
- Installation-level laboratory-confirmed influenza and COVID-19 case data for USINDOPACOM can be found on page 10 of the report.

## ILI Activity (Service Members) and Laboratory-Confirmed Influenza (All Beneficiaries)



\*Locations colored in dark gray have no service member medical encounter data.



# Influenza Activity: USINDOPACOM (2023 2024 Season: Week 17)

## Laboratory-Confirmed Influenza by Installation (All Beneficiaries)

Country	Location	Service	A (not sub typed)		A (H1N1)		A (H3N2)		A & B		B		Total positive	Total tested	% Positive	Change from last report
			2 wks	Season	2 wks	Season	2 wks	Season	2 wks	Season	2 wks	Season	2 wks	Season	2 wks	2 wks
Guam	ANDERSEN JB	J	0	30	0	0	0	0	0	0	0	2	0	34	0	=
Guam	JOINT (NF) RGN MARIA-NAS GUAM-ANDRSN	J	1	148	0	29	0	13	0	0	0	21	1	71	1	-
Japan	ATSUGI	J	0	14	0	0	0	0	0	0	0	6	0	9	0	=
Japan	CAMP ZAMA	J	0	13	0	0	0	0	0	0	0	4	0	7	0	=
Japan	KADENA AB	J	0	15	0	1	0	2	0	0	0	5	0	1	0	=
Japan	MCAS IWAKUNI	J	0	38	0	0	0	0	0	0	0	13	0	5	0	=
Japan	MISAWA AB	J	2	28	0	2	0	1	0	0	0	2	2	23	9	+
Japan	OKINAWA	J	2	143	0	0	0	1	0	0	1	33	3	95	3	+
Japan	SASEBO	J	0	15	0	0	0	0	0	1	0	8	0	13	0	=
Japan	YOKOSUKA	J	1	76	0	1	0	1	0	0	1	24	2	35	6	-
Japan	YOKOTA AB	J	0	67	0	0	0	0	0	0	0	5	0	7	0	=
Korea, Republic of	CAMP HUMPHREYS	J	2	196	0	13	0	44	0	0	1	42	3	71	4	-
Korea, Republic of	CHINHAE	J	0	4	0	0	0	0	0	0	0	1	0	1	0	=
Korea, Republic of	KOREA	J	0	33	0	0	0	0	0	0	0	39	0	29	0	=
Korea, Republic of	KUNSAN AB	J	0	23	0	0	0	0	0	0	0	7	0	8	0	=
Korea, Republic of	OSAN AB	J	0	203	0	0	0	0	0	0	0	59	0	55	0	=
Korea, Republic of	TAEGU	J	0	33	0	3	0	3	0	0	0	13	0	14	0	=
Korea, Republic of	TONGDUCHON	J	0	1	0	0	0	0	0	0	0	2	0	2	0	=
United States	CAMP H M SMITH	J	0	2	0	0	0	0	0	0	0	0	0	2	0	=
United States	FT SHAFTER	J	9	227	2	51	1	36	0	0	1	47	13	455	3	=
United States	JOINT (NF) BASE PEARL HARBOR-HICKAM	J	1	39	0	1	1	3	0	0	1	15	3	32	9	+
United States	KANEOHE	J	1	60	0	0	0	0	0	0	0	10	1	48	2	-
United States	SCHOFIELD BARRACKS	J	17	428	0	11	0	4	0	1	4	70	21	289	7	-

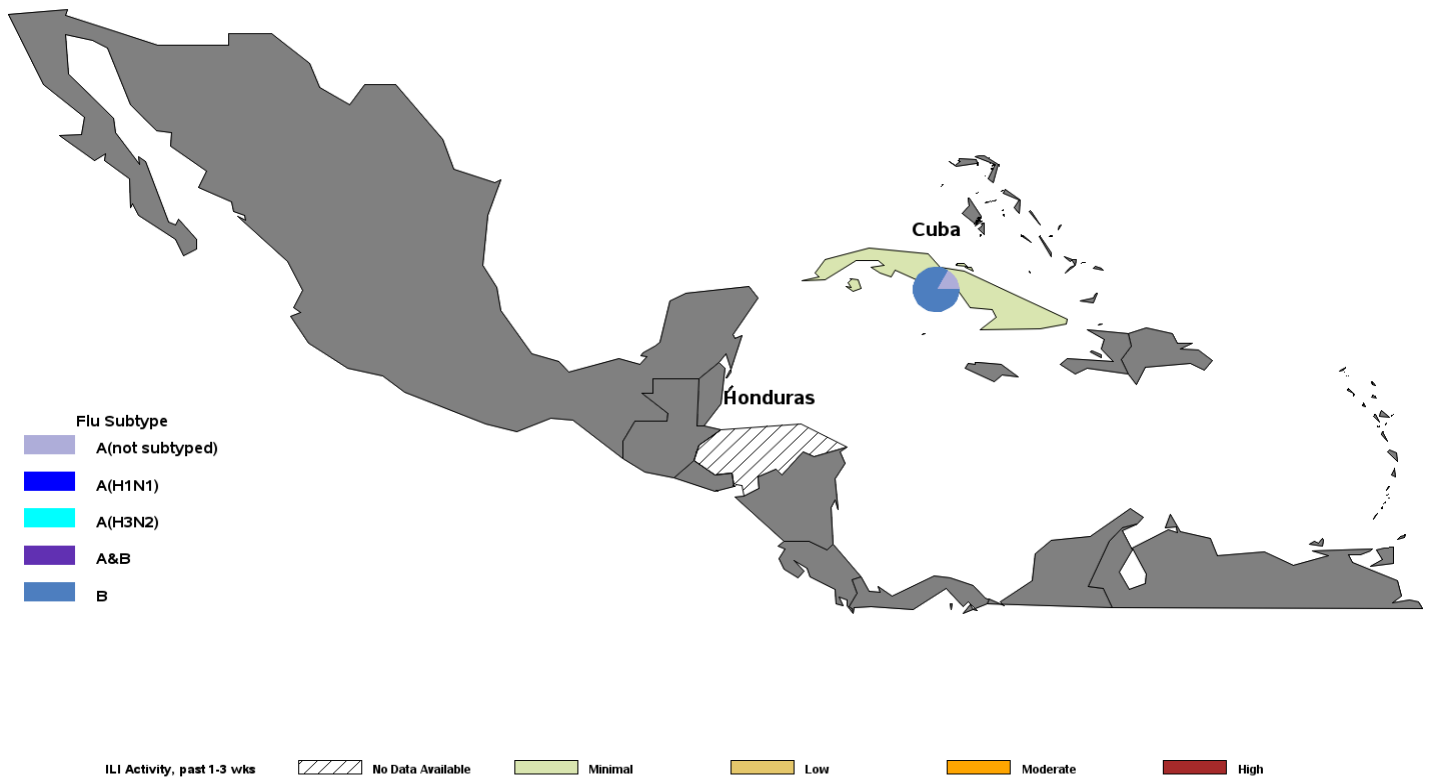
## COVID-19 Cases Since Week 40 by Installation (All Beneficiaries)

Country	Location	Service	COVID 19		Change from past 2 weeks
			2 wks	Since week 41	
Guam	ANDERSEN JB	J	6	107	-
Guam	JOINT (NF) RGN MARIANAS GUAM-ANDRSN	J	6	177	+
Japan	CAMP ZAMA	J	2	50	=
Japan	MISAWA AB	J	2	66	+
Japan	OKINAWA	J	13	283	+
Japan	YOKOSUKA	J	6	301	-
Korea, Republic of	CAMP HUMPHREYS	J	10	540	-
Korea, Republic of	KUNSAN AB	J	1	57	=
Korea, Republic of	OSAN AB	J	5	415	-
United States	FT SHAFTER	J	40	1380	+
United States	HICKAM JBHP	J	1	66	=
United States	JOINT (NF) BASE PEARL HARBOR-HICKAM	J	2	177	=

"2 wks" in the tables is defined as labs collected 7-21 days prior to the current week of the report. This delay is due to delays in receiving data from MHS GENESIS.

# Influenza Activity: USSOUTHCOM (2023 2024 Season: Week 17)

- ILI activity was minimal in Cuba and Honduras.
- Six laboratory-confirmed influenza cases have been reported in Cuba for the 2023-2024 season, 5 were influenza B and 1 was influenza A (not subtyped).



\*Locations colored in dark gray have no service member medical encounter data.

## Laboratory-Confirmed Influenza by Installation (All Beneficiaries)

Country	Location	Service	A (not sub typed)		A (H1N1)		A (H3N2)		A & B		B		Total positive	Total tested	% Positive	Change from last report
			2 wks	Season	2 wks	Season	2 wks	Season	2 wks	Season	2 wks	Season				
Cuba	GUANTANAMO BAY	J	0	1	0	0	0	0	0	0	1	5	1	7	14	-

## COVID-19 Cases Since Week 40 by Installation (All Beneficiaries)

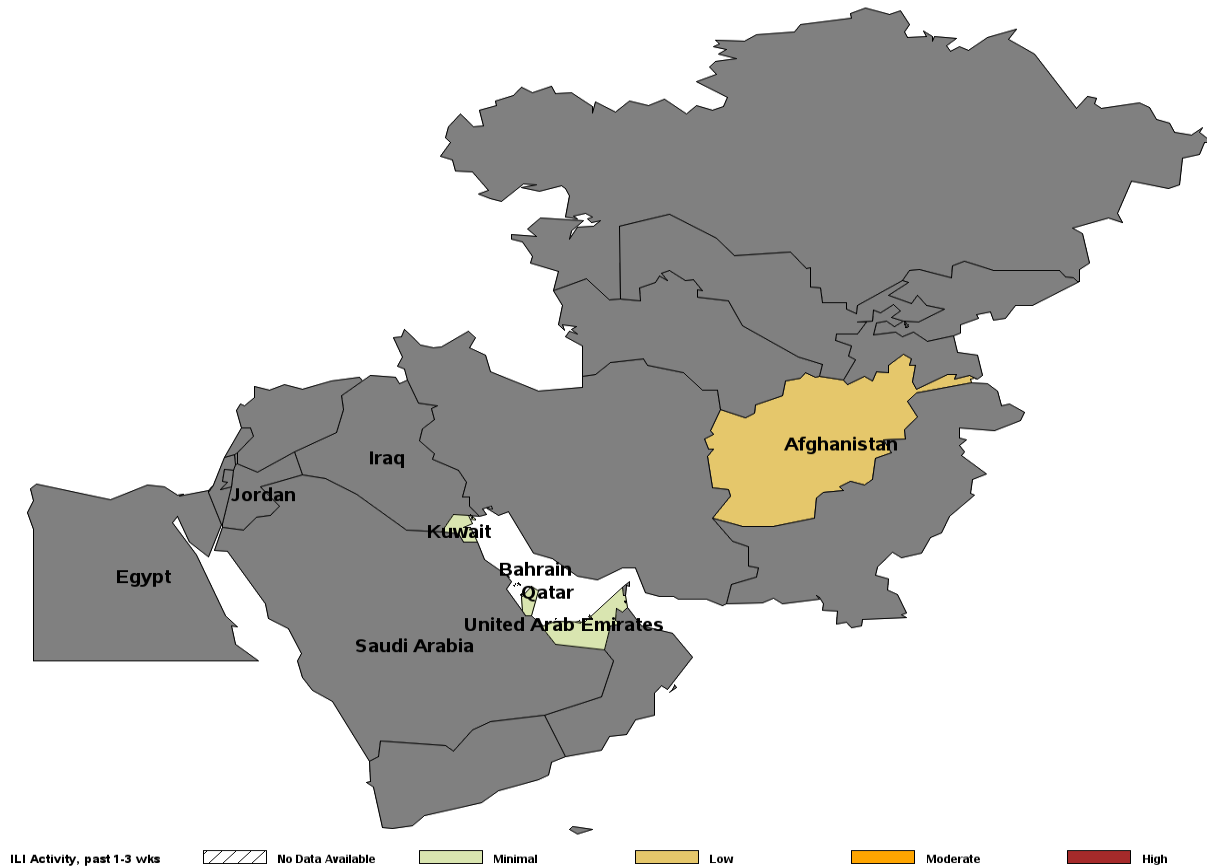
Country	Location	Service	COVID 19		Change from past 2 weeks
			2 wks	Since week 41	
Cuba	GUANTANAMO BAY	J	3	28	-

"2 wks" in the tables is defined as labs collected 7-21 days prior to the current week of the report. This delay is due to delays in receiving data from MHS GENESIS.

# Influenza Activity: USCENTCOM (2023-2024 Season: Week 17)

- ILI activity in USCENTCOM countries with data, averaged over weeks 14-16, was minimal, except in Afghanistan, which had low activity.

## ILI Activity (Service Members)



\*Locations colored in dark gray have no service member medical encounter data.

# USNORTHCOM Laboratory-Confirmed Influenza

(2023-2024 Season: Week 17)

## Laboratory-Confirmed Influenza (All Beneficiaries) by Installation Alaska through Connecticut

\*Reporting of laboratory data from MHS GENESIS is typically delayed by 2 weeks

State	Location	Service	A (not sub typed)		A (H1N1)		A (H3N2)		A & B		B		Total positive	Total tested	% Positive	Change from last report
			2 wks	Season	2 wks	Season	2 wks	Season	2 wks	Season	2 wks	Season	2 wks	2 wks	2 wks	
AK	EIELSON AFB	J	0	23	0	0	0	1	0	0	7	12	7	13	54	-
AK	ELMENDORF JBER	J	3	171	1	31	1	7	0	1	4	52	9	81	11	-
AK	FT GREELY	J	0	3	0	0	0	0	0	0	0	0	0	9	0	=
AK	FT WAINWRIGHT	J	0	398	0	0	0	0	0	2	15	115	15	154	10	-
AK	JOINT (AF) BSE ELMENDORF-RICHARDSON	J	0	1	0	0	0	0	0	0	2	0	2	0	0	=
AL	ATC MOBILE	C	0	0	0	0	0	0	0	0	0	0	0	0	0	=
AL	FT NOVOSEL	J	1	50	0	0	0	0	0	0	2	27	3	16	19	+
AL	MAXWELL AFB	J	1	110	0	2	0	0	0	0	0	36	1	42	2	-
AL	REDSTONE ARSENAL	J	0	38	0	0	0	0	0	2	0	45	0	31	0	=
AR	LITTLE ROCK AFB	J	1	59	0	0	0	0	0	2	0	17	1	11	9	-
AZ	DAVIS-MONTHAN AFB	J	0	19	0	1	0	0	0	0	1	18	1	11	9	+
AZ	FT HUACHUCA	J	0	28	0	0	0	0	0	0	0	12	0	11	0	=
AZ	LUKE AFB	J	2	88	0	0	0	0	0	0	3	26	5	49	10	+
AZ	YUMA	J	0	3	0	1	0	0	0	0	0	7	0	7	0	=
AZ	YUMA PROVING GROUND	J	0	0	0	0	0	0	0	0	0	0	0	0	0	=
CA	BEALE AFB	J	0	3	0	2	0	0	0	0	2	10	2	15	13	+
CA	BRIDGEPORT	J	0	0	0	0	0	0	0	0	0	0	0	2	0	=
CA	CAMP PENDLETON	J	5	446	0	6	0	2	0	1	3	81	8	436	2	=
CA	CHINA LAKE	J	0	5	0	0	0	0	0	0	0	3	0	5	0	=
CA	CORONADO	J	0	1	0	5	0	1	0	0	0	1	0	7	0	=
CA	EDWARDS AFB	J	1	2	0	0	0	0	0	0	0	0	1	1	100	+
CA	EL CENTRO	J	0	2	0	0	0	0	0	0	0	0	0	0	0	=
CA	FT IRWIN	J	2	154	0	0	0	0	0	0	0	45	2	92	2	+
CA	ISC ALAMEDA	C	0	2	0	0	0	0	0	0	0	0	0	1	0	=
CA	ISC SAN PEDRO	C	0	0	0	0	0	0	0	0	0	0	0	0	0	=
CA	LEMOORE	J	0	9	0	12	0	4	0	0	4	17	4	33	12	-
CA	LOS ANGELES AFB	J	0	0	1	1	0	0	0	0	1	1	2	6	33	-
CA	MONTEREY	J	0	2	0	0	0	0	0	0	0	0	0	1	0	=
CA	POINT MUGU	J	0	0	0	0	0	0	0	0	0	0	0	0	0	=
CA	PORT HUENEME	J	0	5	0	0	0	0	0	0	0	1	0	0	0	=
CA	SAN DIEGO	J	0	57	3	336	4	274	0	1	6	131	13	514	3	+
CA	TEMECULA	J	0	12	0	0	0	0	0	0	0	4	0	8	0	=
CA	TRAINING CENTER PETALUMA	C	0	1	0	0	0	0	0	0	0	0	0	0	0	=
CA	TRAVIS AFB	J	3	128	0	2	0	0	0	0	1	21	4	144	3	=
CA	TWENTYNINE PALMS	J	3	64	0	0	0	0	0	0	0	26	3	69	4	-
CA	VANDENBERG SFB	J	1	14	0	0	0	0	0	0	0	1	1	12	8	-
CO	BUCKLEY SFB	J	2	58	0	0	0	0	0	0	0	20	2	9	22	-
CO	FT CARSON	J	16	868	0	1	0	1	1	18	5	542	22	335	7	-
CO	PETERSON SFB	J	2	79	0	0	0	0	0	0	0	55	2	24	8	-
CO	SCHRIEVER SFB	J	1	8	0	0	0	0	0	0	0	2	1	5	20	+
CO	USAF ACADEMY	J	5	220	0	0	0	1	0	0	0	66	5	62	8	-
CT	COAST GUARD ACADEMY	C	0	9	0	0	0	0	0	0	0	1	0	29	0	=
CT	GROTON	J	0	32	0	0	0	1	0	3	3	35	3	28	11	+

"2 wks" in the table is defined as labs collected 7-21 days prior to the current week of the report. This delay is due to delays in receiving data from MHS GENESIS.

# USNORTHCOM Laboratory-Confirmed Influenza

(2023-2024 Season: Week 17)

## Laboratory-Confirmed Influenza (All Beneficiaries) by Installation District of Columbia through Georgia

\*Reporting of laboratory data from MHS GENESIS is typically delayed by 2 weeks

State	Location	Service	A (not sub typed)		A (H1N1)		A (H3N2)		A & B		B		Total positive	Total tested	% Positive	Change from last report
			2 wks	Season	2 wks	Season	2 wks	Season	2 wks	Season	2 wks	Season	2 wks	Season	2 wks	
DC	16th WH MEDICAL CLINIC	J	0	0	0	0	0	0	0	0	0	0	0	0	0	=
DC	BOLLING JBAB	J	1	19	0	0	0	0	0	0	0	1	1	14	7	+
DC	HEADQUARTERS SUPPORT COMMAND	C	0	0	0	0	0	0	0	0	0	0	0	0	0	=
DC	PENTAGON	J	1	61	0	0	0	0	0	0	0	5	1	29	3	+
DC	WASHINGTON DC	J	2	7	0	0	0	0	0	0	0	0	2	10	20	-
DE	DOVER AFB	J	0	28	0	0	0	1	0	0	0	15	0	10	0	=
FL	AIR STATION CLEARWATER	C	0	3	0	0	0	0	0	0	0	0	0	0	0	=
FL	AIR STATION MIAMI	C	0	1	0	0	0	0	0	0	0	0	0	0	0	=
FL	ARMY GARRISON MIAMI	J	1	11	0	0	0	0	0	0	0	2	1	13	8	-
FL	BASE MIAMI	C	0	0	0	0	0	0	0	0	0	0	0	0	0	=
FL	EGLIN AFB	J	4	167	0	7	0	0	0	0	1	73	5	53	9	-
FL	GROUP ST PETERSBURG	C	0	0	0	0	0	0	0	0	0	0	0	2	0	=
FL	HURLBURT FIELD	J	1	38	0	0	0	0	0	0	0	16	1	21	5	-
FL	JACKSONVILLE	J	4	225	0	0	0	0	1	6	9	234	14	157	9	+
FL	KEY WEST	J	0	1	0	0	0	0	0	0	0	13	0	4	0	=
FL	MACDILL AFB	J	0	30	0	0	1	3	0	1	0	14	1	19	5	-
FL	MAYPORT	J	1	22	0	0	0	0	0	2	0	13	1	11	9	-
FL	MILTON	J	0	19	0	0	0	0	0	2	1	24	1	28	4	+
FL	PANAMA CITY	J	1	2	0	0	0	1	0	0	0	0	1	1	100	-
FL	PATRICK SFB	J	0	30	0	0	0	0	0	0	0	21	0	32	0	=
FL	PENSACOLA	J	2	204	0	0	0	0	0	0	2	114	4	283	1	+
FL	SABAL PARK CLINIC	J	5	36	0	0	0	0	0	1	0	13	5	15	33	+
FL	TYNDALL AFB	J	0	33	0	0	0	0	0	0	1	46	1	13	8	-
GA	ALBANY	J	0	2	0	0	0	0	0	0	0	8	0	2	0	=
GA	FT EISENHOWER	J	5	316	0	11	0	0	0	0	0	155	5	82	6	+
GA	FT MOORE	J	1	258	0	0	0	0	0	2	3	102	4	99	4	-
GA	FT STEWART	J	1	163	0	3	0	0	0	1	0	79	1	62	2	-
GA	HUNTER ARMY AIRFIELD	J	0	42	0	0	0	0	0	0	0	25	0	23	0	=
GA	KINGS BAY	J	2	27	0	0	0	0	0	1	0	42	2	5	40	-
GA	MOODY AFB	J	0	17	0	1	0	2	0	0	0	6	0	10	0	=
GA	ROBINS AFB	J	0	1	0	48	1	9	0	0	0	32	1	46	2	+

"2 wks" in the table is defined as labs collected 7-21 days prior to the current week of the report. This delay is due to delays in receiving data from MHS GENESIS.

# USNORTHCOM COVID-19 Cases

(2023-2024 Season: Week 17)

## COVID-19 Cases Since Week 40 (All Beneficiaries) by Installation Alaska through Georgia

\*Reporting of laboratory data from MHS GENESIS is typically delayed by 2 weeks

State	Location	Service	COVID 19		Change from last report
			2 wks	Since week 41	
AK	EIELSON AFB	J	0	34	=
AK	ELMENDORF JBER	J	3	238	+
AK	FT WAINWRIGHT	J	6	416	-
AL	ATC MOBILE	C	0	1	=
AL	FT NOVOSEL	J	1	56	=
AL	MAXWELL AFB	J	2	220	+
AL	REDSTONE ARSENAL	J	0	89	=
AR	LITTLE ROCK AFB	J	1	75	=
AZ	DAVIS-MONTHAN AFB	J	0	153	=
AZ	FT HUACHUCA	J	0	52	=
AZ	LUKE AFB	J	0	272	=
CA	BEALE AFB	J	2	35	=
CA	CAMP PENDLETON	J	15	997	+
CA	EDWARDS AFB	J	0	9	=
CA	FT IRWIN	J	4	263	-
CA	ISC ALAMEDA	C	0	14	=
CA	LEMOORE	J	1	85	=
CA	MONTEREY	J	0	3	=
CA	SAN DIEGO	J	13	887	+
CA	TRAVIS AFB	J	7	285	+
CA	TWENTYNINE PALMS	J	7	274	+
CA	VANDENBERG SFB	J	1	42	=
CO	BUCKLEY SFB	J	1	110	=
CO	FT CARSON	J	22	1203	+
CO	PETERSON SFB	J	3	79	+
CO	USAF ACADEMY	J	2	286	=
CT	COAST GUARD ACADEMY	C	0	42	=
CT	GROTON	J	0	1	=
DC	HEADQUARTERS SUPPORT COMMAND	C	0	6	=
DE	DOVER AFB	J	1	110	=
FL	AIR STATION CLEARWATER	C	2	11	+
FL	AIR STATION MIAMI	C	0	2	=
FL	EGLIN AFB	J	3	280	+
FL	HURLBURT FIELD	J	0	65	=
FL	JACKSONVILLE	J	11	516	-
FL	MACDILL AFB	J	0	77	=
FL	MAYPORT	J	0	1	=
FL	PATRICK SFB	J	1	40	-
FL	PENSACOLA	J	12	641	-
FL	TYNDALL AFB	J	0	91	=
GA	FT EISENHOWER	J	6	688	-
GA	FT MOORE	J	12	503	+
GA	FT STEWART	J	4	306	-
GA	HUNTER ARMY AIRFIELD	J	0	10	=
GA	KINGS BAY	J	0	2	=
GA	MOODY AFB	J	0	37	=
GA	ROBINS AFB	J	1	206	-

“2 wks” in the table is defined as labs collected 7-21 days prior to the current week of the report. This delay is due to delays in receiving data from MHS GENESIS.

# USNORTHCOM Laboratory-Confirmed Influenza

(2023-2024 Season: Week 17)

## Laboratory-Confirmed Influenza (All Beneficiaries) by Installation Idaho through New York

\*Reporting of laboratory data from MHS GENESIS is typically delayed by 2 weeks

State	Location	Service	A (not subtyped)		A (H1N1)		A (H3N2)		A & B		B		Total positive	Total tested	% Positive	Change from last report
			2 wks	Season	2 wks	Season	2 wks	Season	2 wks	Season	2 wks	Season	2 wks	Season	2 wks	
IL	MOUNTAIN HOME AFB	J	0	5	0	0	0	0	0	0	0	3	0	2	0	=
IL	GREAT LAKES	J	1	15	0	9	1	9	0	0	0	6	2	44	5	+
IL	NORTH CHICAGO	J	0	225	1	109	0	267	0	0	1	44	2	21	10	-
IL	ROCK ISLAND ARSENAL	J	0	5	0	0	0	0	0	0	1	9	1	1	100	+
IL	SCOTT AFB	J	0	1	0	24	0	8	0	0	0	17	0	15	0	=
IN	CAMP ATTERBURY	J	1	1	0	0	0	0	0	0	0	0	1	8	13	+
KS	FT LEAVENWORTH	J	7	46	0	0	0	0	0	0	3	22	10	36	28	-
KS	FT RILEY	J	9	149	0	1	0	1	0	2	1	88	10	98	10	+
KS	MCCONNELL AFB	J	0	26	0	0	0	0	0	1	0	12	0	14	0	=
KY	FT CAMPBELL	J	14	344	0	0	1	3	0	8	10	427	25	180	14	=
KY	FT KNOX	J	1	61	0	0	0	0	0	10	2	137	3	39	8	-
LA	BARKSDALE AFB	J	1	33	0	1	0	0	0	1	3	50	4	24	17	+
LA	FT JOHNSON	J	14	167	0	0	0	0	0	0	1	86	15	101	15	+
LA	NEW ORLEANS	J	0	10	0	0	0	0	0	1	0	20	0	13	0	=
MA	AIR STATION CAPE COD	C	0	0	0	0	0	0	0	0	0	0	0	1	0	=
MA	HANSCOM AFB	J	0	7	0	5	0	2	0	0	0	4	0	2	0	=
MA	ISC BOSTON	C	0	1	0	0	0	0	0	0	0	0	0	0	0	=
MD	ABERDEEN PROVING GROUND	J	0	16	0	0	0	0	0	0	0	5	0	14	0	=
MD	ANDREWS JBA	J	4	176	1	3	0	2	0	0	6	46	11	102	11	-
MD	ANNAPOLIS	J	1	123	0	0	0	1	0	0	0	6	1	21	5	-
MD	BALTIMORE YARD	C	0	0	0	0	0	0	0	0	0	1	0	0	0	=
MD	BETHESDA	J	8	291	1	47	1	27	0	0	5	85	15	261	6	-
MD	FT DETRICK	J	1	40	0	0	0	0	0	0	3	29	4	21	19	+
MD	FT MEADE	J	4	63	0	0	0	0	0	0	1	37	5	65	8	+
MD	INDIAN HEAD	J	0	4	0	0	0	0	0	0	0	4	0	0	0	=
MD	PATUXENT RIVER	J	2	20	0	0	0	0	0	0	0	9	2	18	11	-
MI	AIR STATION TRAVERSE CITY	C	0	0	0	0	0	0	0	0	0	0	0	0	0	=
MI	SECTOR DETROIT	C	0	0	0	0	0	0	0	0	0	0	0	0	0	=
MO	FT LEONARD WOOD	J	2	449	0	1	0	0	0	4	5	204	7	127	6	+
MO	WHITEMAN AFB	J	3	58	0	8	0	3	0	0	1	21	4	24	17	+
MS	COLUMBUS AFB	J	0	10	0	0	0	0	0	0	0	12	0	1	0	=
MS	GULFPORT	J	1	21	0	0	0	0	0	1	0	22	1	11	9	-
MS	KEESLER AFB	J	1	121	0	10	2	2	0	0	0	40	3	37	8	+
MS	MERIDIAN	J	0	12	0	0	0	0	0	0	0	13	0	8	0	=
MT	MALMSTROM AFB	J	0	101	0	0	0	0	0	0	1	19	1	8	13	-
NC	CAMP LEJEUNE	J	2	348	0	19	0	1	0	2	1	245	3	138	2	+
NC	CHERRY POINT	J	0	30	0	1	0	1	0	0	1	51	1	14	7	-
NC	FT LIBERTY	J	28	924	0	32	0	8	0	7	6	582	34	452	8	-
NC	SEYMOUR JOHNSON AFB	J	0	31	0	5	0	0	0	1	0	30	0	10	0	=
ND	GRAND FORKS AFB	J	0	28	0	0	0	0	0	0	0	4	0	1	0	=
ND	MINOT AFB	J	0	10	0	6	0	0	0	1	0	2	0	4	0	=
NE	OFFUTT AFB	J	1	12	0	2	0	2	0	0	0	8	1	3	33	-
NH	PORTSMOUTH	J	0	15	0	0	0	0	0	0	0	3	0	5	0	=
NJ	MCGUIRE JBMDL	J	1	41	0	3	0	2	0	0	1	18	2	27	7	+
NJ	TRAINING CENTER CAPE MAY	C	0	74	0	0	0	5	0	1	0	12	0	15	0	=
NM	CANNON AFB	J	1	45	0	0	0	2	0	0	0	38	1	28	4	-
NM	HOLLOMAN AFB	J	1	43	0	0	0	0	0	0	2	16	3	25	12	+
NM	KIRTLAND AFB	J	0	34	0	0	0	0	0	0	0	9	0	9	0	=
NM	WHITE SANDS MISSILE RANGE	J	0	8	0	0	0	0	0	0	0	2	0	1	0	=
NV	FALLON	J	0	6	0	0	0	0	0	0	0	13	0	2	0	=
NV	NELLIS AFB	J	3	212	0	63	0	7	0	0	2	80	5	117	4	-
NY	FT DRUM	J	5	23	0	0	2	6	0	0	2	10	9	30	30	+
NY	SARATOGA SPRINGS	J	0	0	0	0	0	0	0	0	0	0	0	0	0	=
NY	SECTOR NEW YORK	C	0	1	0	0	0	0	0	0	0	0	0	1	0	=
NY	WEST POINT	J	1	50	0	0	0	0	0	0	0	11	1	17	6	+

"2 wks" in the table is defined as labs collected 7-21 days prior to the current week of the report.

This delay is due to delays in receiving data from MHS GENESIS.



# USNORTHCOM COVID-19 Cases

(2023-2024 Season: Week 17)

## COVID-19 Cases Since Week 40 (All Beneficiaries) by Installation Idaho through New York

\*Reporting of laboratory data from MHS GENESIS is typically delayed by 2 weeks

State	Location	Service	COVID 19		Change from last report
			2 wks	Since week 41	
ID	MOUNTAIN HOME AFB	J	0	61	=
IL	GREAT LAKES	J	0	96	=
IL	NORTH CHICAGO	J	0	758	=
IL	SCOTT AFB	J	0	95	=
KS	FT LEAVENWORTH	J	0	107	=
KS	FT RILEY	J	2	366	-
KS	MCCONNELL AFB	J	0	100	=
KY	FT CAMPBELL	J	8	558	=
KY	FT KNOX	J	9	197	+
LA	BARKSDALE AFB	J	0	143	=
LA	FT JOHNSON	J	2	160	+
MA	HANSCOM AFB	J	0	14	=
MD	ANDREWS JBA	J	6	314	-
MD	ANNAPOLIS	J	1	78	-
MD	BALTIMORE YARD	C	0	2	=
MD	BETHESDA	J	9	614	-
MD	FT MEADE	J	4	269	-
MD	PATUXENT RIVER	J	0	43	=
MI	AIR STATION TRAVERSE CITY	C	0	2	=
MI	SECTOR DETROIT	C	0	1	=
MO	FT LEONARD WOOD	J	5	487	-
MO	WHITEMAN AFB	J	0	133	=
MS	COLUMBUS AFB	J	0	14	=
MS	KEESLER AFB	J	2	359	+
MT	MALMSTROM AFB	J	0	160	=
NC	CAMP LEJEUNE	J	10	1132	-
NC	CHERRY POINT	J	0	92	=
NC	FT LIBERTY	J	6	1825	-
NC	SEYMOUR JOHNSON AFB	J	3	96	=
NC	SUPPORT CENTER ELIZABETH CITY	C	0	6	=
NC	USMC BASE CAMP LEJEUNE	N	0	10	=
ND	GRAND FORKS AFB	J	0	113	=
ND	MINOT AFB	J	0	127	=
NE	OFFUTT AFB	J	0	13	=
NJ	AIR STATION ATLANTIC CITY	C	0	3	=
NJ	MCGUIRE JBMDL	J	2	153	-
NJ	TRAINING CENTER CAPE MAY	C	2	84	-
NM	CANNON AFB	J	0	30	=
NM	HOLLOMAN AFB	J	1	70	=
NM	KIRTLAND AFB	J	0	122	=
NV	FALLON	J	0	11	=
NV	NELLIS AFB	J	5	401	+
NY	FT DRUM	J	1	100	-
NY	SECTOR NEW YORK	C	0	4	=
NY	WEST POINT	J	1	37	-

"2 wks" in the table is defined as labs collected 7-21 days prior to the current week of the report. This delay is due to delays in receiving data from MHS GENESIS.

# USNORTHCOM Laboratory-Confirmed Influenza

(2023-2024 Season: Week 17)

## Laboratory-Confirmed Influenza (All Beneficiaries) by Installation Ohio through Wyoming

\*Reporting of laboratory data from MHS GENESIS is typically delayed by 2 weeks

State	Location	Service	A (not subtyped)		A (H1N1)		A (H3N2)		A & B		B		Total positive	Total tested	% Positive	Change from last report
			2 wks	Season	2 wks	Season	2 wks	Season	2 wks	Season	2 wks	Season	2 wks	2 wks	2 wks	
OH	WRIGHT-PATTERSON AFB	J	6	223	0	17	0	12	0	0	4	97	10	138	7	-
OK	ALTUS AFB	J	0	25	0	3	0	1	0	0	0	50	0	46	0	=
OK	FT SILL	J	2	179	0	0	0	0	0	3	22	258	24	137	18	-
OK	TINKER AFB	J	0	31	0	3	0	2	0	0	1	24	1	35	3	-
OK	VANCE AFB	J	0	24	0	0	0	0	0	0	0	19	0	12	0	=
PA	CARLISLE BARRACKS	J	1	7	0	0	0	0	0	0	1	14	2	13	15	-
PA	NEW CUMBERLAND ARMY DEPOT	J	0	0	0	0	0	0	0	0	1	1	1	5	20	-
PR	AIR STATION BORINQUEN	C	0	2	0	0	0	0	0	0	0	1	0	0	0	=
PR	FT BUCHANAN	J	0	16	0	0	0	0	0	0	0	11	0	9	0	=
PR	SECTOR SAN JUAN	C	0	1	0	0	0	0	0	0	0	0	0	0	0	=
RI	NEW ENGLAND	J	1	20	0	0	0	0	0	0	0	8	1	8	13	-
SC	BEAUFORT	J	0	36	0	1	0	0	0	0	0	17	0	43	0	=
SC	CHARLESTON JB	J	1	30	0	0	0	1	0	0	1	9	2	21	10	+
SC	FT JACKSON	J	4	253	0	0	0	0	0	6	2	85	6	75	8	-
SC	JOINT (NF) CHARLESTON (NAV WPNSTA)	J	0	71	0	2	0	0	0	0	0	23	0	60	0	=
SC	MCRD PARRIS ISLAND	J	0	128	0	0	0	1	1	3	9	62	10	64	16	-
SC	SHAW AFB	J	0	57	0	0	0	1	0	0	0	23	0	23	0	=
SD	ELLSWORTH AFB	J	0	19	0	0	0	0	0	0	0	19	0	0	0	=
TN	FT CAMPBELL	J	3	59	0	0	0	0	0	7	2	160	5	38	13	+
TN	MILLINGTON	J	1	26	0	0	0	0	0	0	1	32	2	11	18	+
TX	59th MDW-BULVERDE CLINIC	J	0	5	0	0	0	1	0	0	0	5	0	3	0	=
TX	CORPUS CHRISTI	J	0	19	0	0	0	0	0	1	0	16	0	7	0	=
TX	DYESS AFB	J	4	38	0	0	0	0	0	1	1	36	5	40	13	+
TX	FT BLISS	J	14	1244	0	250	2	132	0	5	26	407	42	575	7	-
TX	FT CAVAZOS	J	5	1138	0	26	0	6	0	9	6	307	11	338	3	+
TX	GODFELLOW AFB	J	1	29	0	0	0	0	0	0	0	15	1	19	5	-
TX	JOINT (AF) SAN ANTONIO FSH-LAF-RAF	J	7	1593	0	165	3	65	0	8	4	684	14	593	2	+
TX	KINGSVILLE	J	0	2	0	0	0	0	0	0	0	1	0	1	0	=
TX	LAUGHLIN AFB	J	0	8	0	0	0	0	0	0	0	5	0	3	0	=
TX	MCGREGOR RANGE	A	0	116	0	0	0	0	0	0	0	4	0	4	0	=
TX	SHEPPARD AFB	J	0	13	0	11	0	5	0	0	0	12	0	11	0	=
UT	HILL AFB	J	2	29	1	3	0	0	0	0	0	18	3	12	25	+
VA	DAHLGREN	J	0	0	0	0	0	0	0	0	0	1	0	0	0	=
VA	DUMFRIES	J	0	154	0	0	0	0	1	12	1	106	2	28	7	+
VA	FAIRFAX	J	0	105	0	0	0	0	0	6	1	68	1	32	3	-
VA	FT BELVOIR	J	15	655	0	3	0	0	0	0	5	148	20	316	6	+
VA	FT GREGG-ADAMS	J	0	117	0	0	0	0	0	0	0	58	0	32	0	=
VA	JOINT (AN) BASE MYER-HENDERSON HALL	J	1	25	0	0	0	0	0	0	0	6	1	6	17	-
VA	JOINT (AN) EB LITTLE CREEK-FT STORY	J	0	4	0	8	0	5	0	0	2	10	2	2	100	-
VA	JOINT BASE LANGLEY-EUSTIS	J	0	88	0	0	0	0	0	1	0	60	0	29	0	=
VA	LANGLEY JBLE	J	1	280	0	6	0	5	0	2	1	104	2	177	1	=
VA	NORFOLK	J	0	14	0	4	0	4	0	0	0	14	0	3	0	=
VA	PORTSMOUTH	J	5	123	0	65	0	48	0	5	8	78	13	111	12	-
VA	QUANTICO	J	2	93	0	0	0	0	0	1	0	19	2	28	7	-
VA	SUFFOLK	J	0	2	0	0	0	0	0	0	0	1	0	0	0	=
VA	TRAINING CENTER YORKTOWN	C	0	1	0	0	0	0	0	2	0	0	0	0	0	=
VA	VIRGINIA BEACH	J	0	1	0	6	0	1	0	0	0	3	0	1	0	=
VA	YORKTOWN	J	0	1	0	1	0	0	0	0	0	0	0	0	0	=
WA	BANGOR	J	0	7	0	0	0	0	0	1	0	12	0	1	0	=
WA	EVERETT	J	2	7	0	0	0	0	0	0	0	0	2	6	33	+
WA	FAIRCHILD AFB	J	0	18	0	2	0	1	0	0	0	5	0	15	0	=
WA	FT LEWIS	J	0	0	0	0	0	0	0	0	0	0	0	0	0	=
WA	ISC SEATTLE	C	0	1	0	0	0	0	0	0	0	0	0	0	0	=
WA	JACKSON PARK	J	0	45	0	0	0	0	0	3	1	10	1	48	2	-
WA	JOINT (AF) BASE LEWIS-MCCHORD	J	10	124	2	100	2	20	0	0	4	39	18	241	7	+
WA	MCCHORD JBML	J	0	1	0	0	0	0	0	0	0	0	0	2	0	=
WA	WHIDBEY ISLAND	J	0	6	0	12	0	1	0	0	0	9	0	28	0	=
WY	FE WARREN AFB	J	2	40	0	0	0	0	0	2	1	71	3	28	11	-

"2 wks" in the table is defined as labs collected 7-21 days prior to the current week of the report. This delay is due to delays in receiving data from MHS GENESIS.

# USNORTHCOM COVID-19 Cases

(2024-2024 Season: Week 17)

## COVID-19 Cases Since Week 40 (All Beneficiaries) by Installation Ohio through Wyoming

\*Reporting of laboratory data from MHS GENESIS is typically delayed by 2 weeks

State	Location	Service	COVID 19		Change from last report
			2 wks	Since week 41	
OH	WRIGHT-PATTERSON AFB	J	10	438	-
OK	ALTUS AFB	J	2	102	=
OK	FT SILL	J	13	475	-
OK	TINKER AFB	J	0	99	=
OK	VANCE AFB	J	0	29	=
OR	GROUP NORTH BEND	C	0	1	=
PR	FT BUCHANAN	J	2	56	=
RI	NEW ENGLAND	J	6	184	=
SC	BEAUFORT	J	1	291	-
SC	CHARLESTON JB	J	1	124	-
SC	FT JACKSON	J	23	669	+
SC	JOINT (NF) CHARLESTON (NAV WPNSTA)	J	3	157	+
SC	SHAW AFB	J	0	115	=
SD	ELLSWORTH AFB	J	0	151	=
TX	CORPUS CHRISTI	J	1	71	=
TX	DYESS AFB	J	1	119	=
TX	FT BLISS	J	42	1130	-
TX	FT CAVAZOS	J	19	1570	+
TX	GOODFELLOW AFB	J	1	70	=
TX	GROUP HOUSTON/GALVESTON	C	0	1	=
TX	JOINT (AF) SAN ANTONIO FSH-LAF-RAF	J	19	2802	+
TX	LAUGHLIN AFB	J	0	14	=
TX	SHEPPARD AFB	J	0	82	=
UT	HILL AFB	J	0	61	=
VA	FT BELVOIR	J	17	960	-
VA	FT GREGG-ADAMS	J	2	202	=
VA	ISC PORTSMOUTH	C	0	1	=
VA	JOINT BASE LANGLEY-EUSTIS	J	2	110	=
VA	LANGLEY JBLE	J	10	655	-
VA	PORTSMOUTH	J	4	308	-
VA	QUANTICO	J	1	112	-
VA	TRAINING CENTER YORKTOWN	C	0	8	=
WA	AIR STATION PORT ANGELES	C	0	3	=
WA	FAIRCHILD AFB	J	1	110	-
WA	ISC SEATTLE	C	0	10	=
WA	JACKSON PARK	J	3	264	-
WA	JOINT (AF) BASE LEWIS-MCCHORD	J	21	1503	+
WA	WHIDBEY ISLAND	J	3	171	=
WY	FE WARREN AFB	J	3	139	+

“2 wks” in the table is defined as labs collected 7-21 days prior to the current week of the report. This delay is due to delays in receiving data from MHS GENESIS.

# Surveillance Programs and Data Sources

## Defense Health Agency / Armed Forces Health Surveillance Division (AFHSD):

The Armed Forces Health Surveillance Division (AFHSD) is the central epidemiologic resource for the U.S. Armed Forces, conducting medical surveillance to protect those who serve our nation in uniform and allies who are critical to our national security interests. The Epidemiology and Analysis Section of AFHSD, the Epi Data Center of the Defense Centers for Public Health—Portsmouth (DCPH-P), and the Defense Centers of Public Health—Dayton (DCPH-D) have compiled data for this report from the following sources below.

### Influenza-like Illness Activity:

Medical encounter and demographic data from the AFHSD's Defense Medical Surveillance System (DMSS) are used to generate portions of this report. ICD-10 codes from outpatient encounters are used to identify influenza-like illness (ILI). ILI is defined using the following codes: B97.89, H66.9, H66.90, H66.91, H66.92, H66.93, J00, J01.9, J01.90, J06.9, J09, J09.X, J09.X1, J09.X2, J09.X3, J09.X9, J10, J10.0, J10.00, J10.01, J10.08, J10.1, J10.2, J10.8, J10.81, J10.82, J10.83, J10.89, J11, J11.0, J11.00, J11.08, J11.1, J11.2, J11.8, J11.81, J11.82, J11.83, J11.89, J12.89, J12.9, J18, J18.1, J18.8, J18.9, J20.9, J40, R05, R50.9.

The percentage of all outpatient visits that have an ILI code is calculated each week for all service members, regardless of component. These data are presented weekly for the current season and compared to the four prior seasons among service members. Due to delays in receiving the MHS GENESIS encounter data, the most recent data that can be presented is the 7-21 days prior to the reporting week. Influenza activity levels are calculated by comparing the mean reported percent of visits due to ILI for the previous 7-21 days to the mean reported percent of visits due to ILI during baseline weeks (defined as non-influenza weeks (weeks 22-39) over the past 3 years). Since the 2020-2021 and 2021-2022 influenza seasons were significantly reduced due to COVID-19 mitigation efforts, these seasons were excluded from the baseline calculations. The baseline weeks for the 2023-2024 report are from the years 2019, 2020, and 2023. There are four influenza activity levels, minimal, low, moderate, and high. The activity level corresponds to the number of standard deviations (SD) below, at or above the mean for the previous 7-21 day period compared to the mean of the baseline weeks. Minimal activity corresponds to an influenza percentage that is less than 2 SD above the mean. Low activity corresponds to an influenza percentage that is equal to or greater than 2 SD above the mean, but less than 4 SD above the mean. Moderate activity corresponds to an influenza percentage that is equal to or greater than 4 SD above the mean, but less than 6 SD above the mean. High activity corresponds to an influenza percentage that is equal to or greater than 6 SD above the mean.

Influenza activity levels are presented in the Geographic Combatant Command (GCC) maps, either by Installation, state, or country.

### Influenza Positive Specimens:

Influenza lab results (HL-7 formatted data) are compiled and transmitted from the DCPH-P to AFHSD. Results obtained via PCR, viral culture, and rapid influenza assays are reported. Although the inclusion of rapid tests may underestimate the weekly and cumulative percent positive estimates due to false negatives, visibility of the positive rapid results provides valuable information for this surveillance report. Influenza types/subtypes are categorized as influenza A/not subtyped, influenza A(H1N1), influenza A(H3N2), influenza A and B co-infection, and influenza B. Additionally, laboratory-confirmed positive results are used to identify influenza-related hospitalization cases across the DoD.

The percent positivity is calculated by dividing the number of influenza positive specimens by the total number of specimens (positive and negative only; inconclusive results are excluded). The distributions of percent positive specimens by subtype are presented on a weekly basis for the entire influenza season. Due to delays in receiving the MHS GENESIS laboratory data, the most recent data that can be presented is the 7-21 days prior to reporting week. The distribution of subtypes for the previous 7-21 days are presented as pie graphs for states and countries. For installations, data are presented in tables with counts and percent positive by subtype for the previous 7-21 days and for the entire season. The "change from past 7-21 days" column reports the absolute difference in the percent positive from the prior week's report to the current week's report.

# Surveillance Programs and Data Sources

## **COVID-19 Cases:**

COVID-19 case data are compiled from the COVID-19 positive lab results (HL-7 formatted data) and cases reported in the DRSi. Due to delays in receiving the MHS GENESIS lab data, the most recent data that can be presented is the 7-21 days prior to reporting week. The percent positivity calculation is restricted to only COVID-19 cases reported through the lab data so that an accurate denominator can be obtained. The percent positivity is calculated by dividing the number of COVID-19 positive specimens by the total number of specimens tested for COVID-19. For installations, COVID-19 case data are presented in tables with case counts for the previous 7-21 days and for the entire influenza season (Week 40 to current). The “change from past 7-21 days” column reports the absolute difference in the number of COVID-19 case counts from the prior week’s report to the current week’s report.

## **Pharmacy Transactions for Dispensed Influenza Antiviral Prescriptions:**

HL7-formatted pharmacy transactions are used to assess the number of dispensed influenza antiviral (AV) prescriptions. Four influenza AV medications approved by the Food and Drug Administration (FDA) are recommended by the CDC for use in the United States (US) for the 2023-2024 influenza season: oral oseltamivir (Tamiflu® or generic), inhaled zanamivir (Relenza®), and intravenous peramivir (Rapivab®), and baloxavir marboxil (Xofluz®). These prescriptions are included in this surveillance. The overall count of dispensed AV prescriptions by week is presented graphically for the influenza season. A seasonal baseline is displayed with dispensed AV prescriptions. Surveillance thresholds are displayed with the count of inpatient dispensed AV prescriptions. Additionally, counts of inpatient dispensed influenza AV prescriptions are presented weekly for the influenza season.

## **Influenza Baselines, Thresholds, and Trends:**

Weekly baselines used a three-year average to compare results with those from the same week during the previous three seasons. Since the 2020-2021 and 2021-2022 influenza seasons were significantly reduced due to COVID-19 mitigation efforts, these seasons were excluded from the baseline calculations. The baseline calculations used the 2018-2019, 2019-2020, and 2022-2023 season data. Bands for one and two standard deviations above seasonal baseline estimates are displayed to indicate when trends diverge with respect to timing or volume from those of recent seasons. The ILI, lab, and dispensed AV prescription data thresholds are calculated by adding two standard deviations to the off-season average.

Inpatient thresholds (lab and dispensed AV prescription data) are calculated by adding one standard deviation to the overall weighted average for in-season weeks. Weeks that represent at least 2% of the total season’s laboratory-positive influenza cases for at least two consecutive weeks was considered to be “in-season” or influenza weeks; all other weeks are considered to be “off-season” or non-influenza weeks.

## **Links to Service-Specific Influenza Reports:**

Select the following links to see service-specific influenza surveillance weekly reports:

- Defense Centers for Public Health—Portsmouth (DCPH-P):  
<https://www.med.navy.mil/Navy-Marine-Corps-Public-Health-Center/Population-Health/Epi-Data-Center/Diseases-Conditions-and-Infections/Influenza/>
- Defense Centers for Public Health—Dayton (DCPH-D):  
To access the Air Force weekly influenza reports, an AFNet account is required. Anyone with a CAC can request access to AFNet at: <https://epi.afds.af.mil/nonaf>